

UNIT, DIRECT SUPPORT, AND GENERAL SUPPORT MAINTENANCE
REPAIR PARTS AND SPECIAL TOOLS LIST
TRUCK, 5-TON, 6X6, M809 SERIES TRUCKS (DIESEL)

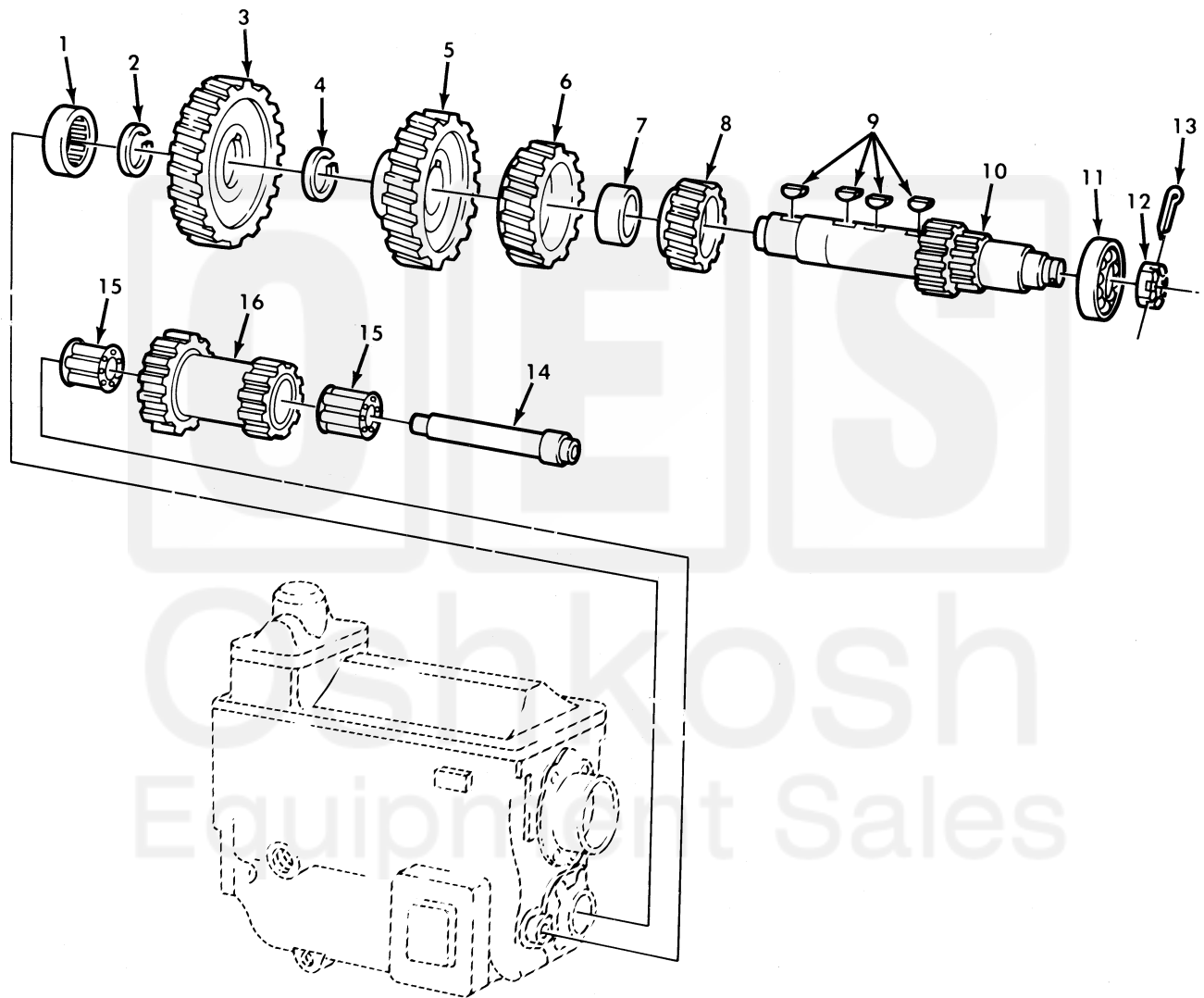


Figure 135. Transmission Countershaft, Idler Shaft, and Gears.

| (1) ITEM NO | (2) SMR CODE | (3) NSN | (4) CAGEC | (5) PART NUMBER | (6) DESCRIPTION AND USABLE ON CODE (UOC) | (7) QTY |
|---|--------------------|------------------|--------------|-----------------------|---|------------|
| GROUP 0701 TRANSMISSION SHAFTS | | | | | | |
| FIG. 135 TRANSMISSION COUNTERSHAFT, IDLER SHAFT, AND GEARS | | | | | | |
| 1 | PFHZZ | 3110-00-117-0695 | 43334 | 1209TS | BEARING, ROLLER, CYLI..... | 1 |
| 2 | PAHZZ | 5365-00-734-6786 | 19207 | 7346786 | RING, RETAINING..... | 1 |
| 3 | PAHZZ | 3020-00-971-5021 | 19207 | 8712209 | GEAR, HELICAL..... | 1 |
| 4 | PAHZZ | 5325-00-286-4406 | 24617 | 2345432 | RING, RETAINING..... | 1 |
| 5 | PAHZZ | 3020-00-971-5018 | 19207 | 8712207 | GEAR, HELICAL..... | 1 |
| 6 | PAHZZ | 3020-00-971-5017 | 19207 | 8712211 | GEAR, HELICAL..... | 1 |
| 7 | PAHZZ | 5365-00-734-6749 | 19207 | 7346749 | SPACER, SLEEVE..... | 1 |
| 8 | PAHZZ | 3020-00-294-6770 | 19207 | 7346776 | GEAR, HELICAL..... | 1 |
| 9 | PAHZZ | 5315-00-011-8002 | 21450 | 118002 | KEY, WOODRUFF..... | 4 |
| 10 | PAHZZ | 3040-00-734-7714 | 19207 | 7347714 | GEARSHAFT, MULTIPLE..... | 1 |
| 11 | PAHZZ | 3110-00-155-6741 | 02413 | 104-310-3 | BEARING, BALL, ANNULA..... | 1 |
| 12 | PAHZZ | 5310-00-734-6779 | 19207 | 7346779 | NUT, PLAIN, SLOTTED, H..... | 1 |
| 13 | PAHZZ | 5315-00-298-1499 | 96906 | MS24665-360 | PIN, COTTER..... | 1 |
| 14 | PAHZZ | 3040-00-734-6750 | 19207 | 7346750 | SHAFT, SHOULDERED..... | 1 |
| 15 | PAHZZ | 3110-00-112-6565 | 24617 | 109397 | BEARING, ROLLER, JOUR..... | 2 |
| 16 | PAHZZ | 3020-00-734-7712 | 19207 | 7347712 | GEAR CLUSTER..... | 1 |

END OF FIGURE

